

INSTALLATION INSTRUCTIONS

FOUR POSTS ADJUSTABLE DISTRIBUTION RACK

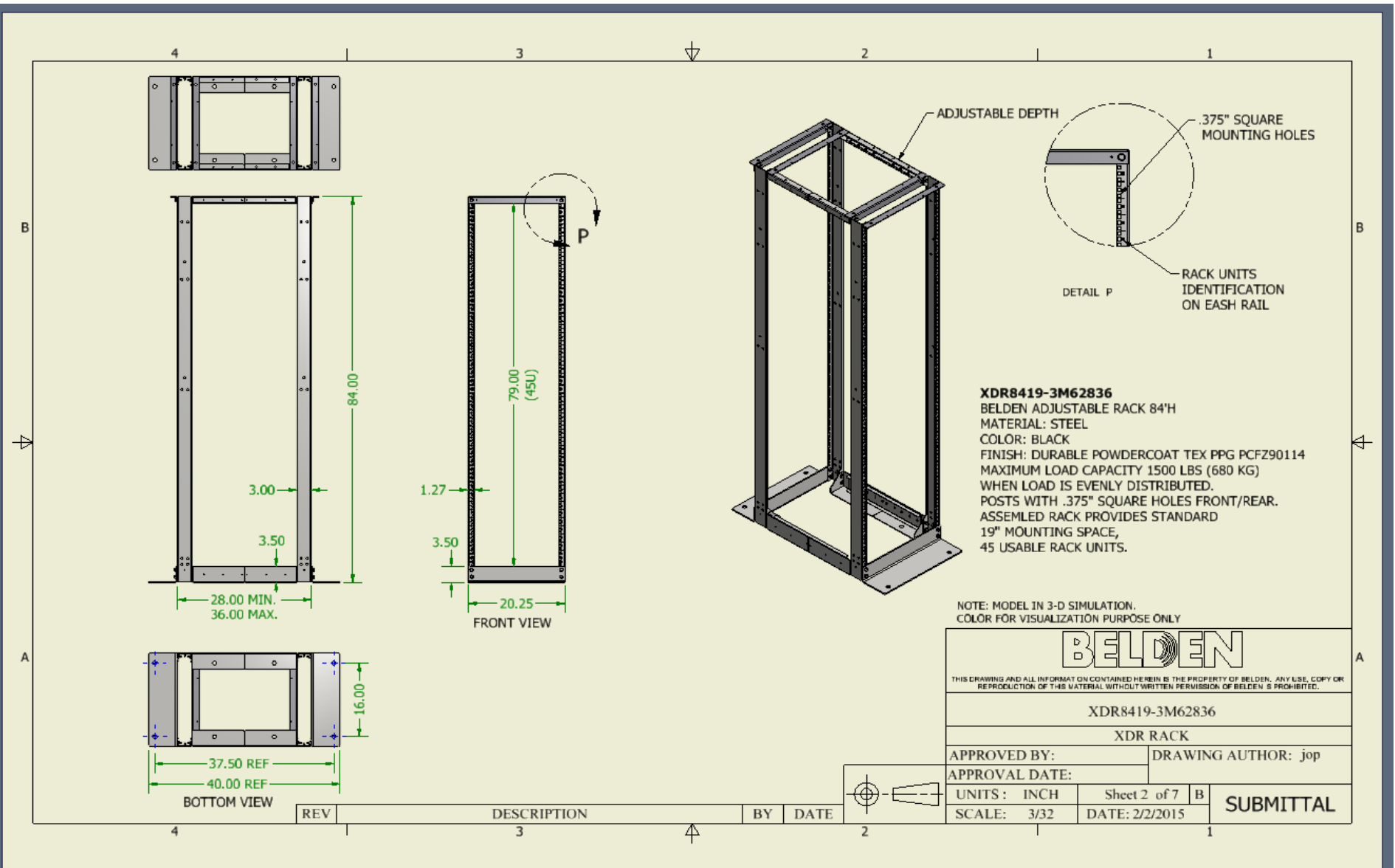


For your safety, upon receipt of your Distribution Rack, read this instruction sheet carefully before starting any installation and assembly.



CAUTION:

This Distribution Rack system must be anchored securely to the floor in order to minimize the potential of accidentally tipping the unit during equipment installation. Anchoring and selection of hardware should be performed by qualified personnel only. Anchoring hardware should be a minimum of 5/8 diameter.



**INSTALLATION INSTRUCTIONS
FOUR POSTS ADJUSTABLE DISTRIBUTION RACK**

This page intentionally left blank

INSTALLATION INSTRUCTIONS

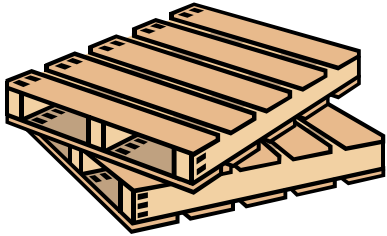
FOUR POSTS ADJUSTABLE DISTRIBUTION RACK



Before Un-packaging your Four Post Rack read below.

This distribution rack is shipped unassembled in one package, banded and shrunk wrapped to a skid. An assembly hardware package is provided in order to assemble the unit. In addition, a number of screws are provided for mounting equipment.

Please make sure upon receipt of delivery that your packaging is intact. Inspect the packaging for any noticeable damage. If there is damage, please notify the freight carrier immediately to file a damaged freight claim.



Once you have inspected the packaging for any damage; carefully remove the wrapping and banding from the skid and the packaging from around your rack components and check all items received against the part list for XDR8419-3M62836

Before you begin, compare the packaged components received with the PARTS LIST below to make sure all parts shown are included.

XDR8419-3M62836 PARTS LIST				
ITEM	QTY	PART NUMBER	DESCRIPTION	NOTE
1	2	433-10675	84" SQ. HOLE POST - LEFT	
2	2	433-10676	84" SQ. HOLE POST - RIGHT	
3	2	433-9009N	MOUNTING FOOT 19"	
4	4	433-9010N	19" TOP ANGLE	
5	2	433-20019	BOTTOM ANGLE - 1	
6	2	433-20020	BOTTOM ANGLE - 2	
7	2	433-20022	TOP ANGLE - 1	
8	2	433-20023	TOP ANGLE - 2	
9	2	433-20021	BOTTOM ADJUSTMENT CHANNEL	
10	2	433-20024	TOP ADJUSTMENT CHANNEL	
11	4	22513	LABEL EARTH GROUND	NEAR GROUND STUDS
12	24	92094	MS 3/8-16 x 1.00 WHIZ BOLT	MOUNTING FEET, TOP ANGLES TO POSTS
13	24	94028	#10-32 KEP NUT	FOR ADJUSTABLE CHANNELS
14	4	91265	#10-32 x 1/2 - PPH w/ WASHER	FOR TOP ANGLE
15	4	94088	1/4-20 KEP NUT	FOR GROUND STUDS
16	80	91217	MS M6 X 16 MM PPH BLACK	FOR MOUNTING EQUIPMENT
17	80	94094	CLIP NUT M6 SQUARE HOLE	FOR SQUARE HOLES IN POSTS

REV	DESCRIPTION	BY	DATE		
1	3			2	1

THIS DRAWING AND ALL INFORMATION CONTAINED HEREIN IS THE PROPERTY OF BELDEN. ANY USE, COPY OR REPRODUCTION OF THIS MATERIAL WITHOUT WRITTEN PERMISSION OF BELDEN IS PROHIBITED.

XDR8419-3M62836
XDR RACK

APPROVED BY: _____ DRAWING AUTHOR: jop

APPROVAL DATE: _____

UNITS: INCH Sheet 1 of 7 B

SCALE: 3/32 DATE: 2/2/2015 SUBMITTAL

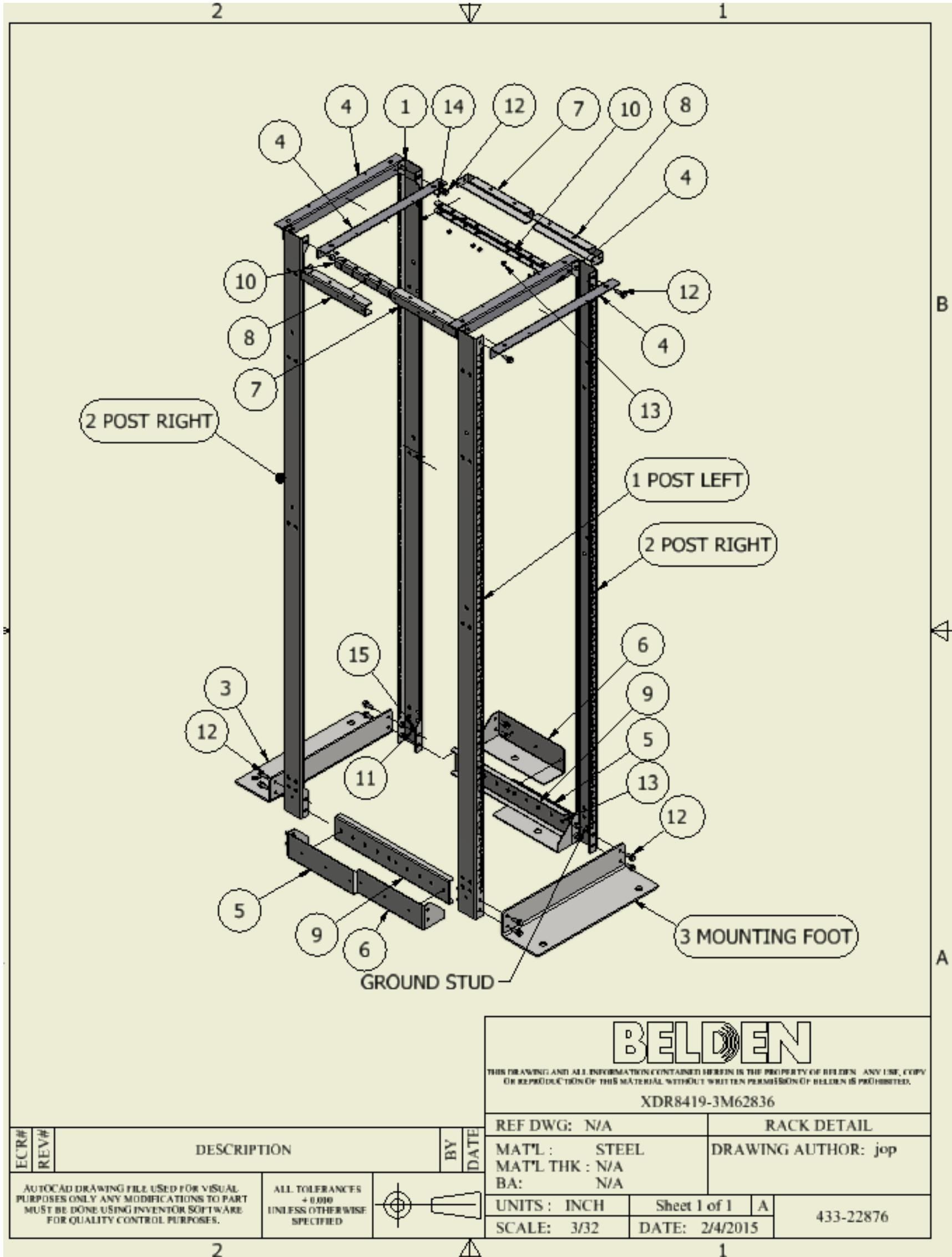
INSTALLATION INSTRUCTIONS

FOUR POSTS ADJUSTABLE DISTRIBUTION RACK

You are now ready to assemble the Rack

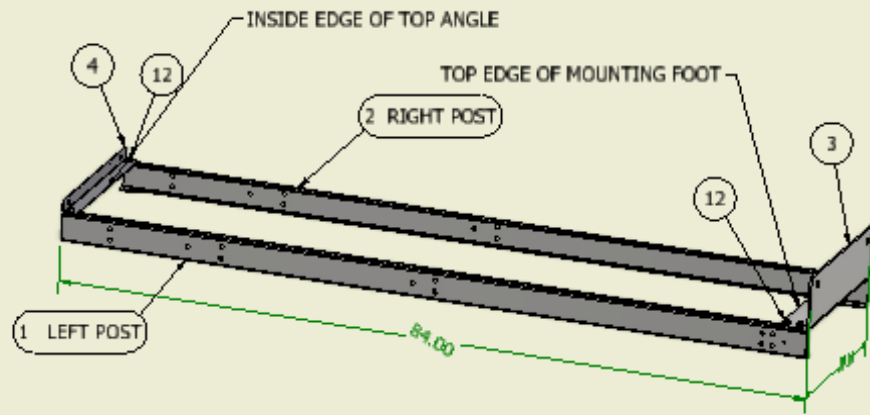
The following tools are required for assembly of this rack:

- 9/16" Open End or adjustable Wrench
- Phillips Screwdriver
- Square



BELDEN	
THIS DRAWING AND ALL INFORMATION CONTAINED HEREIN IS THE PROPERTY OF BELDEN. ANY USE, COPY OR REPRODUCTION OF THIS MATERIAL WITHOUT WRITTEN PERMISSION OF BELDEN IS PROHIBITED.	
XDR8419-3M62836	
REF DWG: N/A	RACK DETAIL
MAT'L : STEEL	DRAWING AUTHOR: jop
MAT'L THK : N/A	
BA: N/A	
UNITS : INCH	Sheet 1 of 1 A
SCALE: 3/32	DATE: 2/4/2015
433-22876	

INSTALLATION INSTRUCTIONS FOUR POSTS ADJUSTABLE DISTRIBUTION RACK



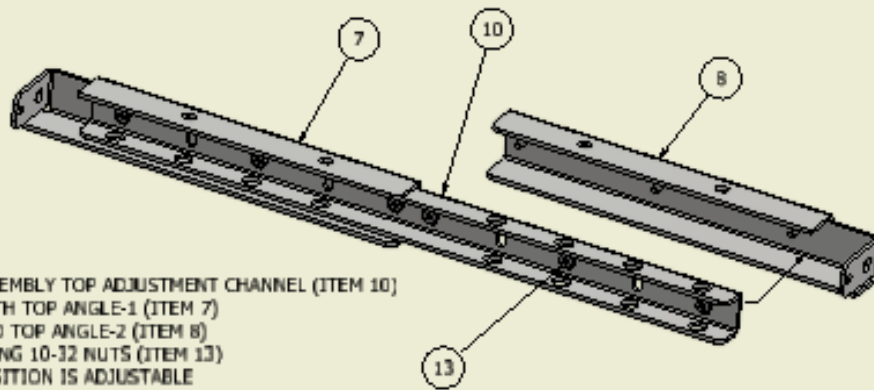
STEP -1

- 1-1 LOCATE TWO PAIR OF VERTICAL RAILS (ITEMS 1,2) PLACE THE RAILS PARALLEL TO THE FLOOR APPROXIMATELY 20" APART.
NOTE: GROUND STUD LOCATED AT THE BOTTOM, 1U MARK AT THE BOTTOM.
- 1-2 POSITION THE RACK TOP ANGLE (ITEM 4) BETWEEN RAILS, TOP AND ATTACH USING 3/8" WHIZ BOLT (ITEM 12). FINGER TIGHT PARTS, DO NOT TIGHTEN THE HARDWARE THIS TIME.
- 1-3 ATTACH FOOT ANGLE (ITEM 3) TO THE BOTTOM OF LEFT AND RIGHT RAILS USING 3/8 WHIZ BOLT (ITEM 12) DO NOT TIGHTEN HARDWARE THIS TIME.
- 1-4 POSITION A SQUARE ON THE TOP EDGE OF THE MOUNTING FOOT AND SQUARE EACH VERTICAL RAIL TO THE MOUNTING FOOT. TIGHTEN WHIZ BOLT TO 25IN/LBS.
- 1-5 POSITION A SQUARE ON THE INSIDE EDGE OF THE VERTICAL RAIL, SQUARE THE TOP ANGLE TO THE VERTICAL RAIL AND TIGHTEN THE WHIZ BOLT TO 25 IN/ LBS.

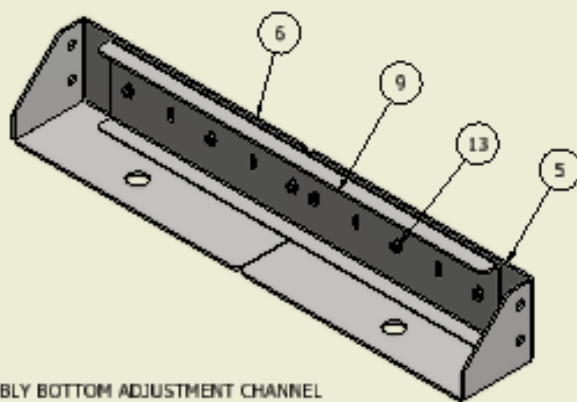
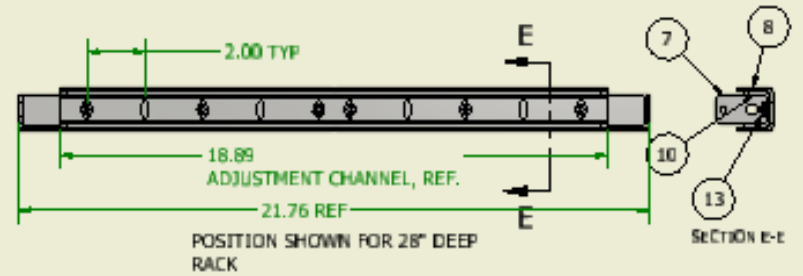
REPEAT STEP 1 FOR REAR POSTS AND ANGLES

BELDEN	
THIS DRAWING AND ALL INFORMATION CONTAINED HEREIN IS THE PROPERTY OF BELDEN. ANY USE, COPY OR REPRODUCTION OF THIS MATERIAL WITHOUT WRITTEN PERMISSION OF BELDEN IS PROHIBITED.	
XDR8419-3M62836	
ASSEMBLY STEP 1	
APPROVED BY:	DRAWING AUTHOR: jop
APPROVAL DATE:	
UNITS: INCH	Sheet 4 of 7
SCALE: 3/32	DATE: 2/2/2015
SUBMITTAL	

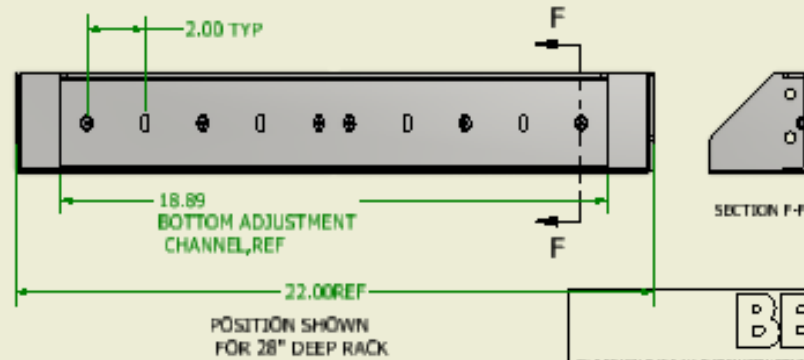
REV	DESCRIPTION	BY	DATE



- STEP 2**
2-1 ASSEMBLY TOP ADJUSTMENT CHANNEL (ITEM 10) WITH TOP ANGLE-1 (ITEM 7) AND TOP ANGLE-2 (ITEM 8) USING 10-32 NUTS (ITEM 13) POSITION IS ADJUSTABLE



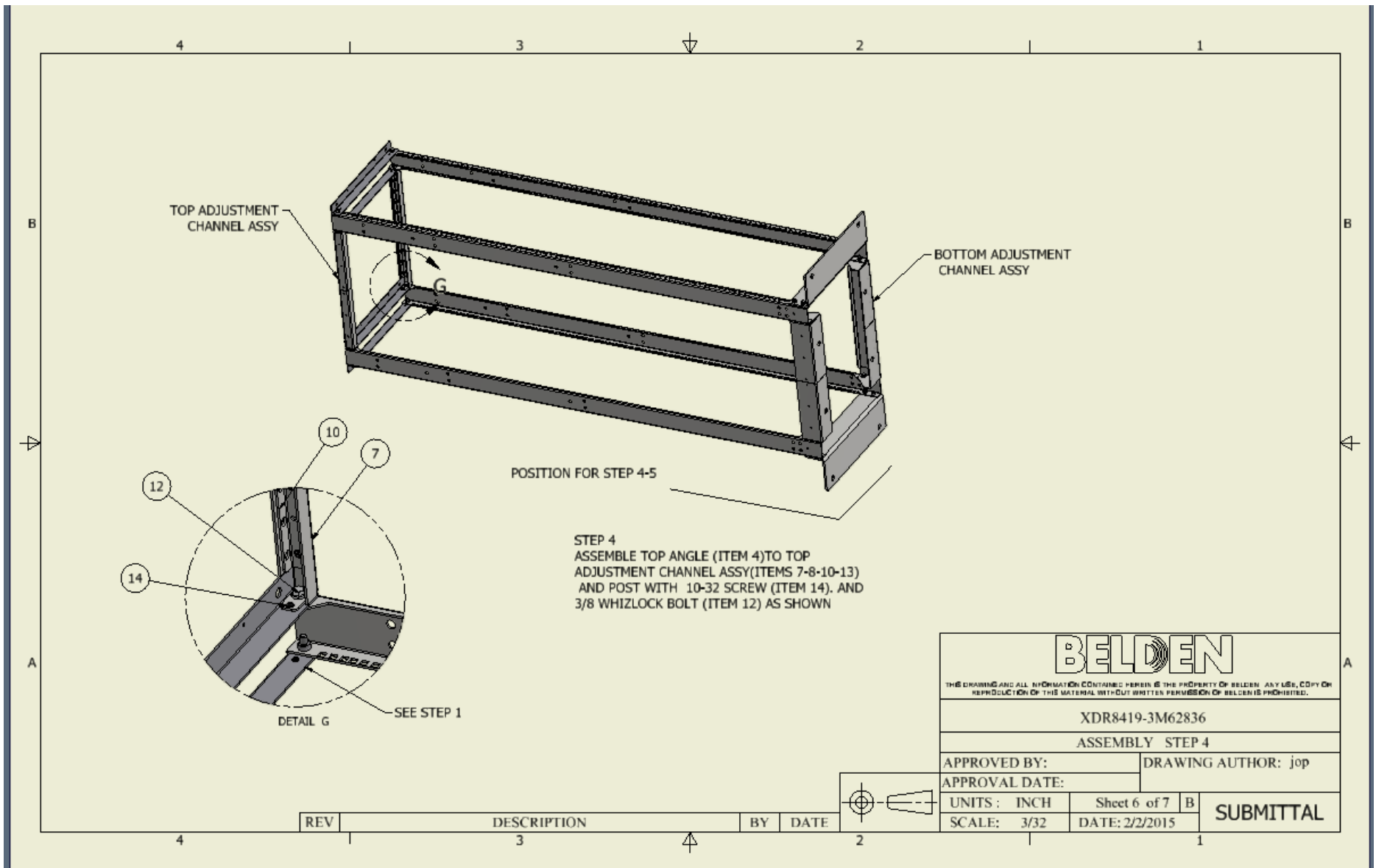
- STEP 3**
3-1 ASSEMBLY BOTTOM ADJUSTMENT CHANNEL (ITEM 9) WITH BOTTOM ANGLE-1 (ITEM 5) AND BOTTOM ANGLE-2 (ITEM 6) USING 10-32 NUTS (ITEM 13) POSITION IS ADJUSTABLE



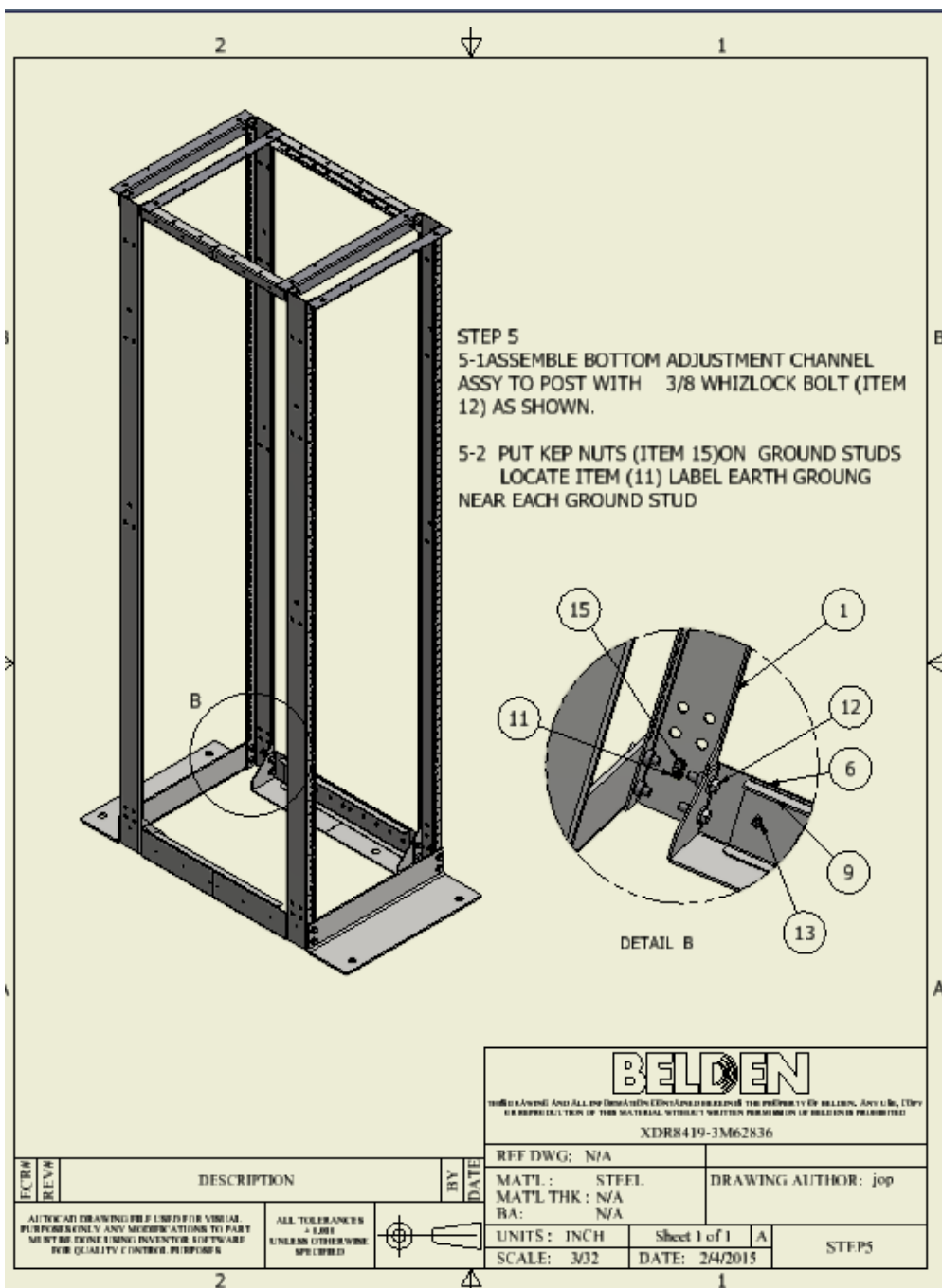
BELDEN	
THIS DRAWING AND ALL INFORMATION CONTAINED HEREIN IS THE PROPERTY OF BELDEN. ANY USE, COPY OR REPRODUCTION OF THIS MATERIAL WITHOUT WRITTEN PERMISSION OF BELDEN IS PROHIBITED.	
XDR8419-3M62836	
ASSEMBLY STEP 2-1	
APPROVED BY:	DRAWING AUTHOR: jop
APPROVAL DATE:	
UNITS: INCH	Sheet 5 of 7
SCALE: /	DATE: 2/2/2015
SUBMITTAL	

REV	DESCRIPTION	BY	DATE

INSTALLATION INSTRUCTIONS FOUR POSTS ADJUSTABLE DISTRIBUTION RACK



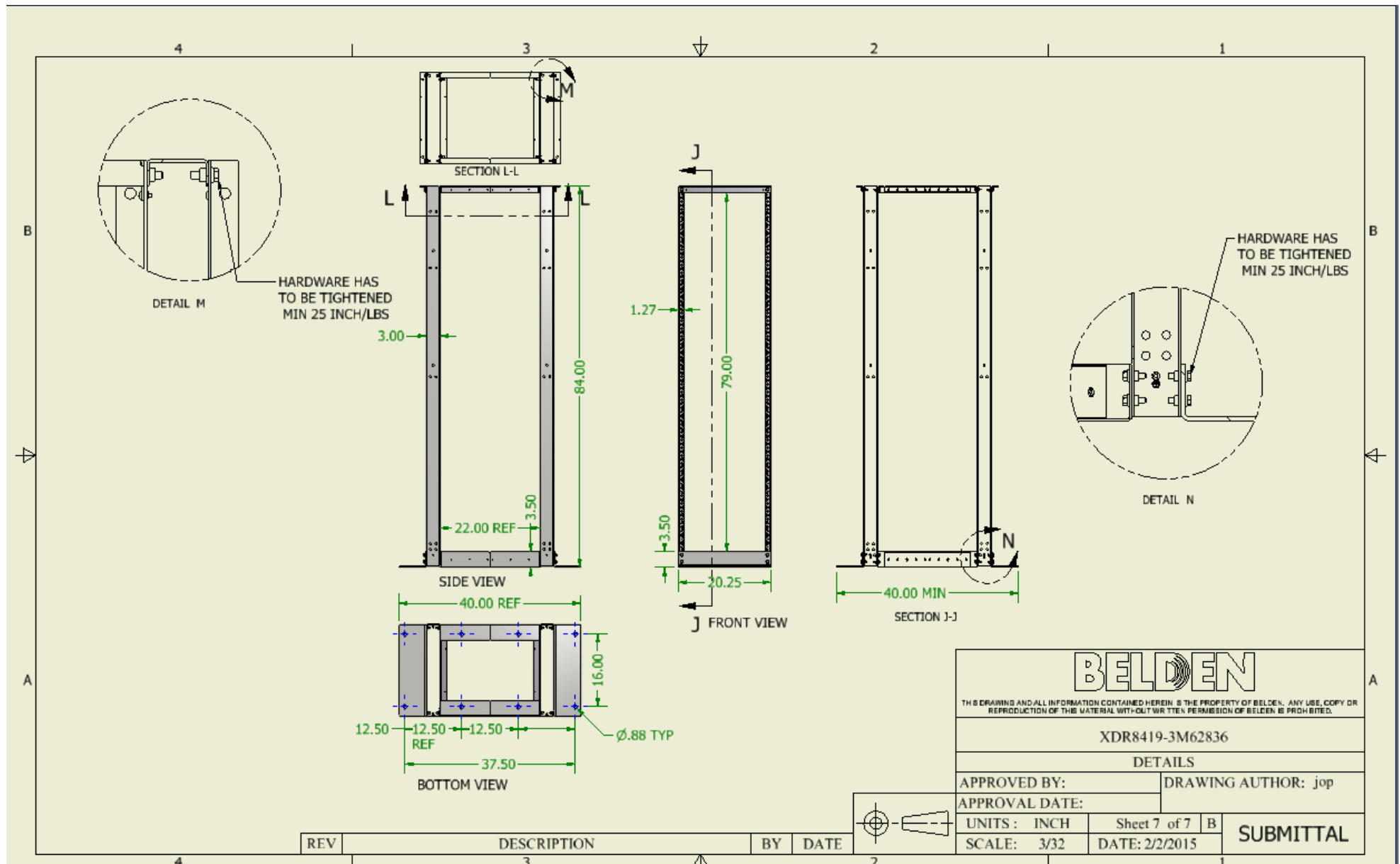
CAUTION: 2 PEOPLE ARE REQUIRED TO RAISE ASSEMBLY TO VERTICAL POSITION. ALL HARDWARE NEEDS TO BE ATTACHED AND TIGHTENED MIN 25 INCH/LBS



INSTALLATION INSTRUCTIONS

FOUR POSTS ADJUSTABLE DISTRIBUTION RACK

NOTE: You have now assembled your XDR Series Four Post adjustable Rack and are ready to continue to anchor your rack securely to the floor



Anchoring Hardware should be a minimum of 5/8" diameter

Important Note: The distribution rack system should be anchored securely to the floor. Due to building code and substrate variations we do not supply the anchoring hardware. Qualified personnel knowledgeable of local code should **ONLY** perform anchoring of this rack.

Grounding Stud

Four, 1/4-20 X 3/4" long Grounding Studs are provided centered inside the left and right frame channels at a location approximately 2.5" up from the bottom. A 1/4-20 hex nut with a captive external tooth lock washer (Part Number 94088) is provided for attachment of the ground lug (not supplied). The hex nut assembly is used to secure the ground lug in place.

Equipment Installation

Your Distribution Rack is provided with four mounting rails with .375" Sq. holes. Your rail EIA rack units are marked for ease of panel and equipment alignment from rail to rail on the front and rear flanges. (80) Mounting hardware provided.

You can now install your equipment