

# Installation Guide

Belden  
INTERFACE Plates

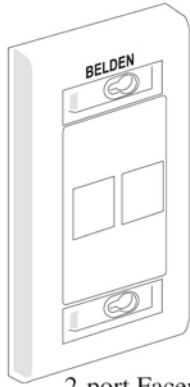
# INTERFACE

Version 04.00 2007

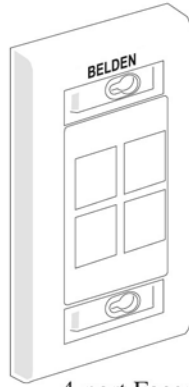
PX101806

1 of 2 pages

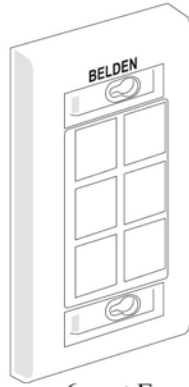
## Faceplates and Accessories



2-port Faceplate



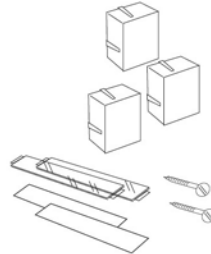
4-port Faceplate



6-port Faceplate

Select the required components from your workplan  
(Typical items shown below)

### Accessories



Blank inserts,  
I.D. inserts,  
clear covers  
and screws

### Module Types



GigaFlex modules  
EZ-MDVO modules

### GigaFlex Tool:

AX100749 (or equivalent)

### Standard Tools

- Slot screwdrivers  
(Small and medium  
sized tips)

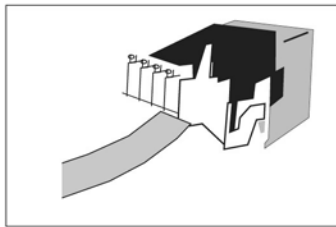
Reference Documents:- GigaFlex: PX103329 - EZ-MDVO: PX102753

## Flush Installation

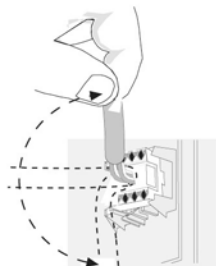
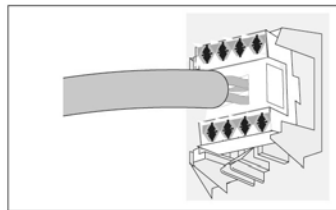
**A**

**1. Terminate modules**  
as per the appropriate  
Installation Guides.

EZ-MDVO modules



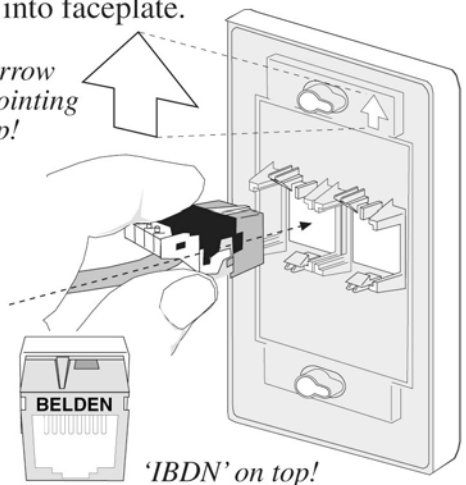
GigaFlex modules



Dress the cable in an  
**upper,  
straight  
or lower  
vertical  
position.**

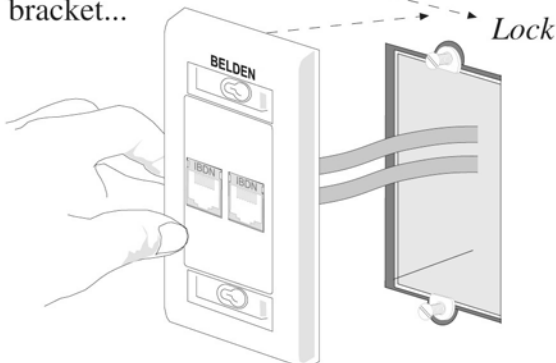
**2. Check orientation and snap module  
assemblies into faceplate.**

Arrow  
pointing  
up!

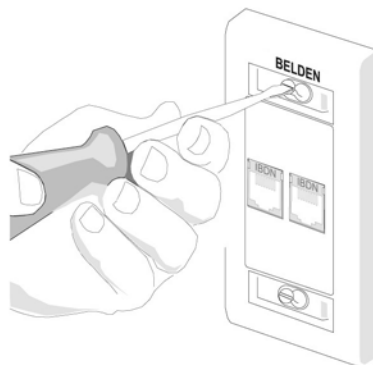


**Note:** Fill unused ports with blank inserts.

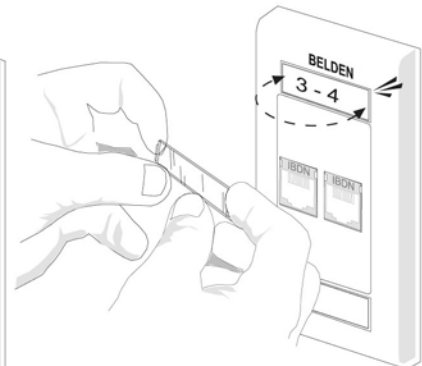
**3. Partially set screws (supplied)**  
into the electrical box, or wall mount  
bracket...



**4. Fasten down screws.**  
*Do not over tighten!*



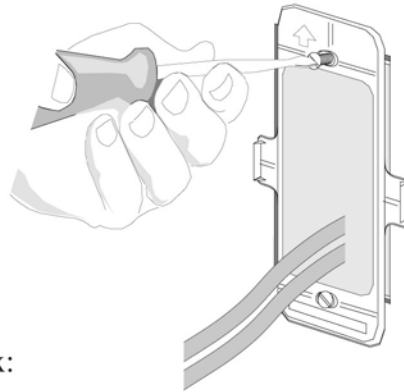
**5. Snap in identification  
inserts and clear covers.**



...and position faceplate assembly over  
screws in the electrical box and slide to lock.

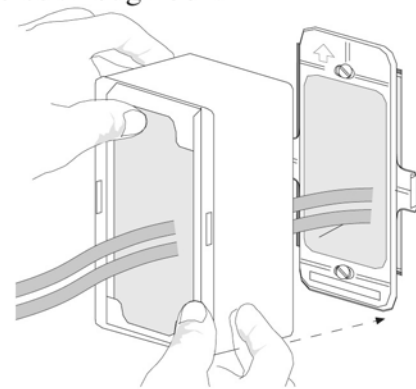
**B** Surface Installation

1. Adhere or fasten surface bracket to wall.



(Use Belden Surface Mount Box: AX101474-477)

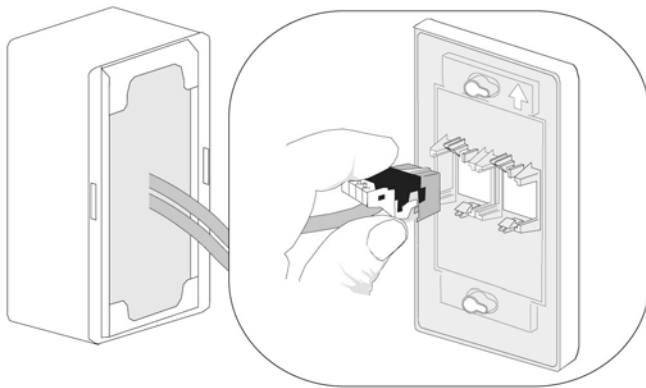
2. Route cables through box.



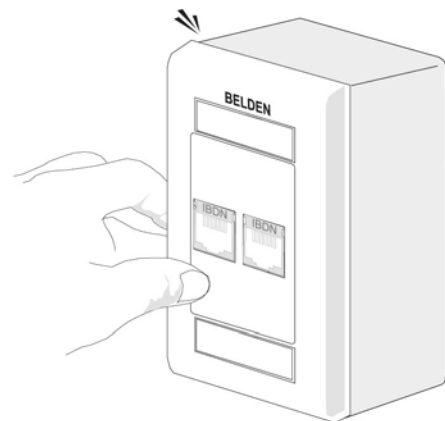
3. Snap surface box onto bracket.

4. Terminate modules as per step A-1.

5. Snap in modules as per step A-2.



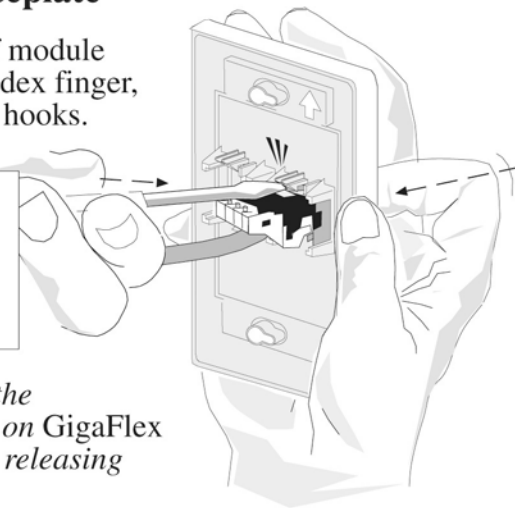
6. Snap faceplate assembly onto surface box.



**C** Removing modules from a faceplate

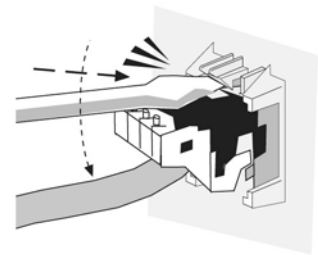
1. Push front of module inwards with index finger, while releasing hooks.

Use small tip screwdriver



**Note:** Remove the protective caps on GigaFlex modules before releasing an assembly.

2. Applying a steady pressure, wedge in screwdriver tip to release upper hook.



3. Wedge tip to release lower hook,

..... and carefully remove module.

