

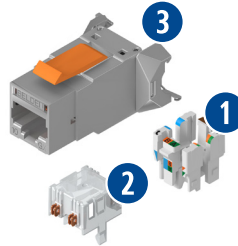
# BELDEN

## Installation Guide

DataTuff® Industrial REVConnect STP  
RJ45 (Jack or Plug)

### Materials

1. Industrial REVConnect Cable Manager
2. Industrial REVConnect Termination Cap
3. Industrial REVConnect STP Jack (or Industrial REVConnect STP Plug)



### Tools

<b>RVUTT01</b> REVConnect Termination Tool	<b>RVUTB01</b> REVConnect Blade Replacement	<b>AX101185</b> Belden Release Tool
---	--	--

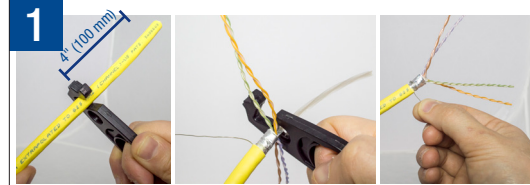
### Spares and Optional Items

**RVUI00UVW-B50**  
Industrial REVConnect Core Pack, Bulk Pack of 50

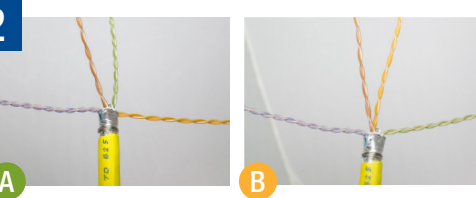
For More Information Belden  
Technical Support  
**1.800.BELDEN1**  
belden.com/industrial-revconnect

STP: PX106884 Revision A

REVCONNECT-STP-INSTALLATION-GUIDE\_IG\_INCA\_BDC\_0119\_ENG

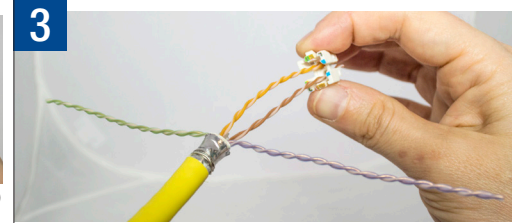


After cut, cross-web protrudes max. 0.04 in (1 mm)

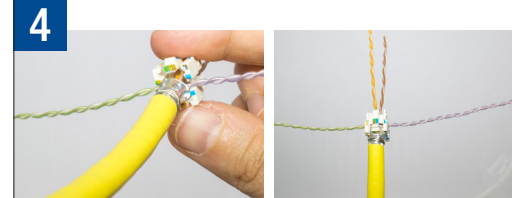


After cable is fully prepped, align your pairs in a 2 up, 2 down formation

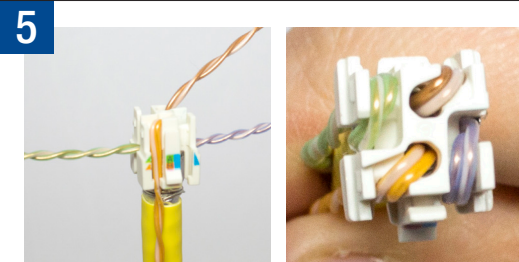
**T568A:** Green and brown pair up  
**T568B:** Orange and brown pair up



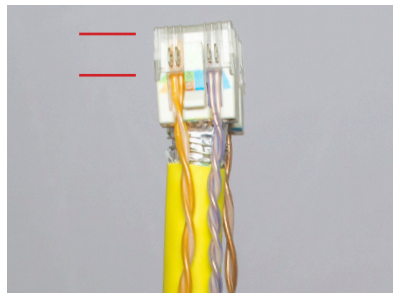
Locate the brown box on the bottom of the cable manager. Insert the brown pair and green (for T568A) or orange (for T568B) pair through the holes and begin sliding the manager down the cable



As you slide the cable manager down the wires, follow the printed arrows to turn the manager *clockwise* until the outer pairs can reside in between their respective, color-coded outer channels. Cable manager should sit snugly on cable



Untwist pairs (do not separate) just enough for the white conductor to reside on the outside. Bend all four pairs over and down the manager and lock into their respective channels.



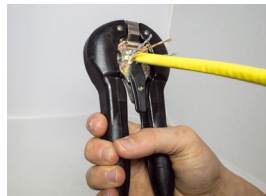
Pairs should lay flat (side by side) between the red lines. Verify your white conductors are all on the outside.



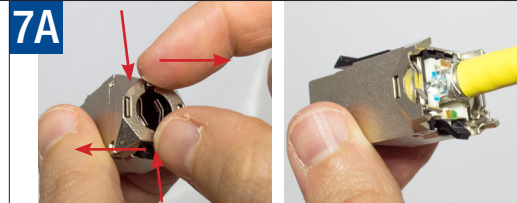
Align the contacts of the cap with the wired cable manager and push until it snaps down.



Insert the terminated core (cable manager and cap) into the tool until the middle latch returns to the center.

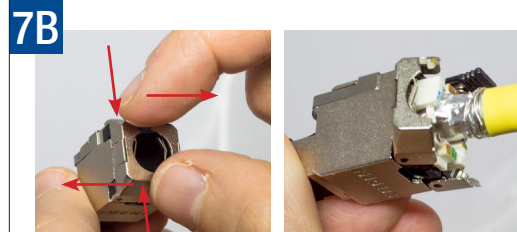


While holding the cable with one hand, compress the handles to complete your termination



Open the rear doors of the jack by squeezing vertically on the pins and pulling your fingers apart. Align the jack rear latch with the latch on the cable manager and snap on your RJ45 housing. Close the rear doors.

The terminated jack is now ready for testing.



Open the rear doors of the RJ45 plug by squeezing vertically on the pins and pulling your fingers apart. Align the plug rear latch with the small latch on the cable manager and snap on your RJ45 housing. Close the rear doors. The terminated plug is now ready for testing.



To remove, open the rear doors and press down on the rear latch with a small screwdriver (or Belden release tool) and pull the cable out



To remove, open the rear doors, lift on the rear latch with a small screwdriver (or Belden release tool) and pull the cable out